

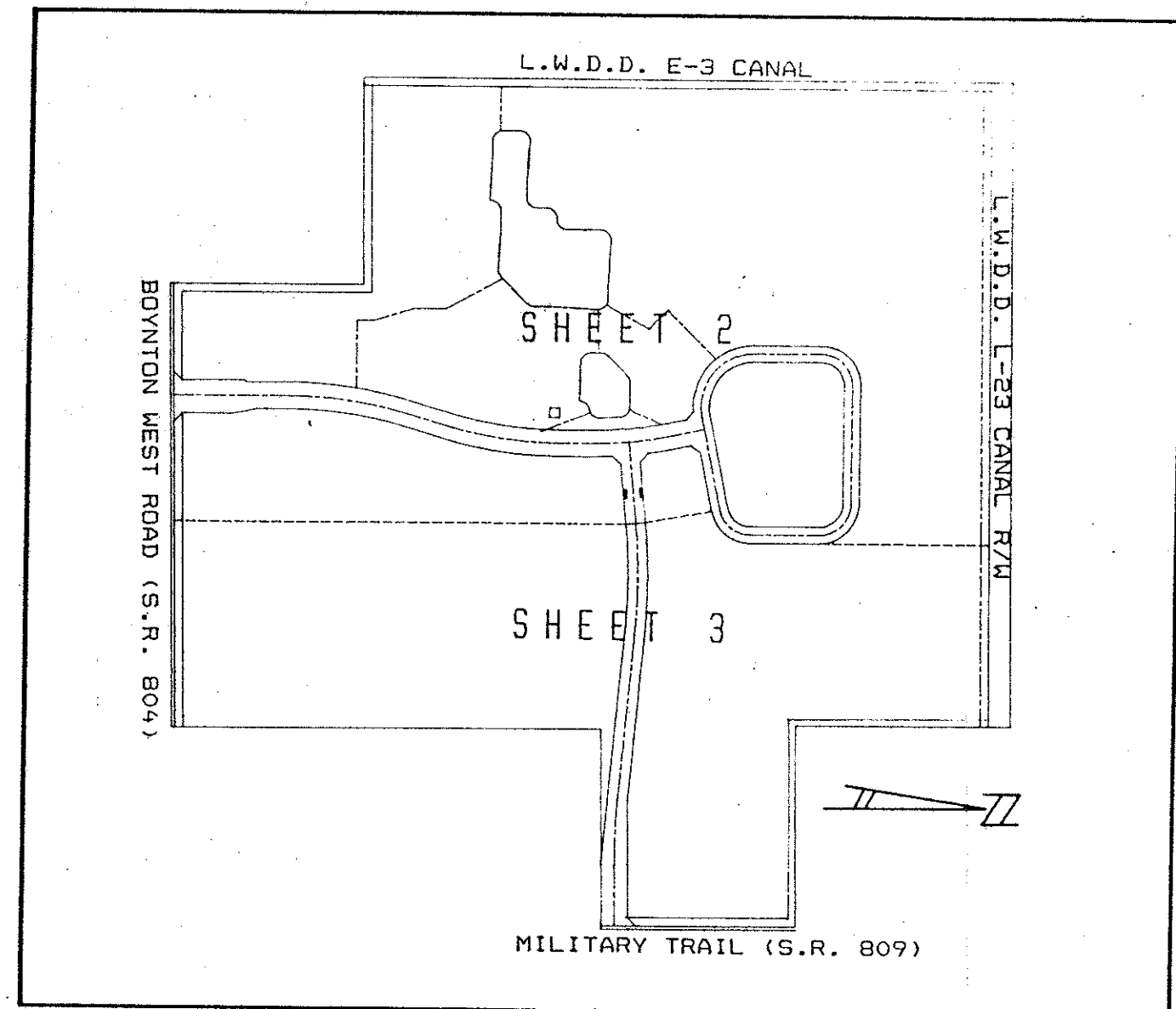
PLATINA PLAT NO. 1 IN COUNTRY CLUB TRAIL - P.U.D.

A REPLAT OF LOTS 29-34 OF BOYNTON GARDENS
AS RECORDED IN PLAT BOOK 6, PAGE 32
PUBLIC RECORDS OF PALM BEACH COUNTY, FLORIDA.
IN PART OF SECTION 23, TOWNSHIP 45 SOUTH, RANGE 42 EAST, PALM BEACH COUNTY, FLORIDA
SHEET 2 OF 4 SHEETS
JANUARY 1989

SUN VALLEY II
P.U.D.

P.B. 56, PGS. 128-135

W. LINE OF
LOTS 33 & 34
BOYNTON GARDENS



INDEX MAP
SCALE 1" = 500'

SW 1/4 OF SW 1/4
OF SE 1/4 OF SEC. 23/45/42

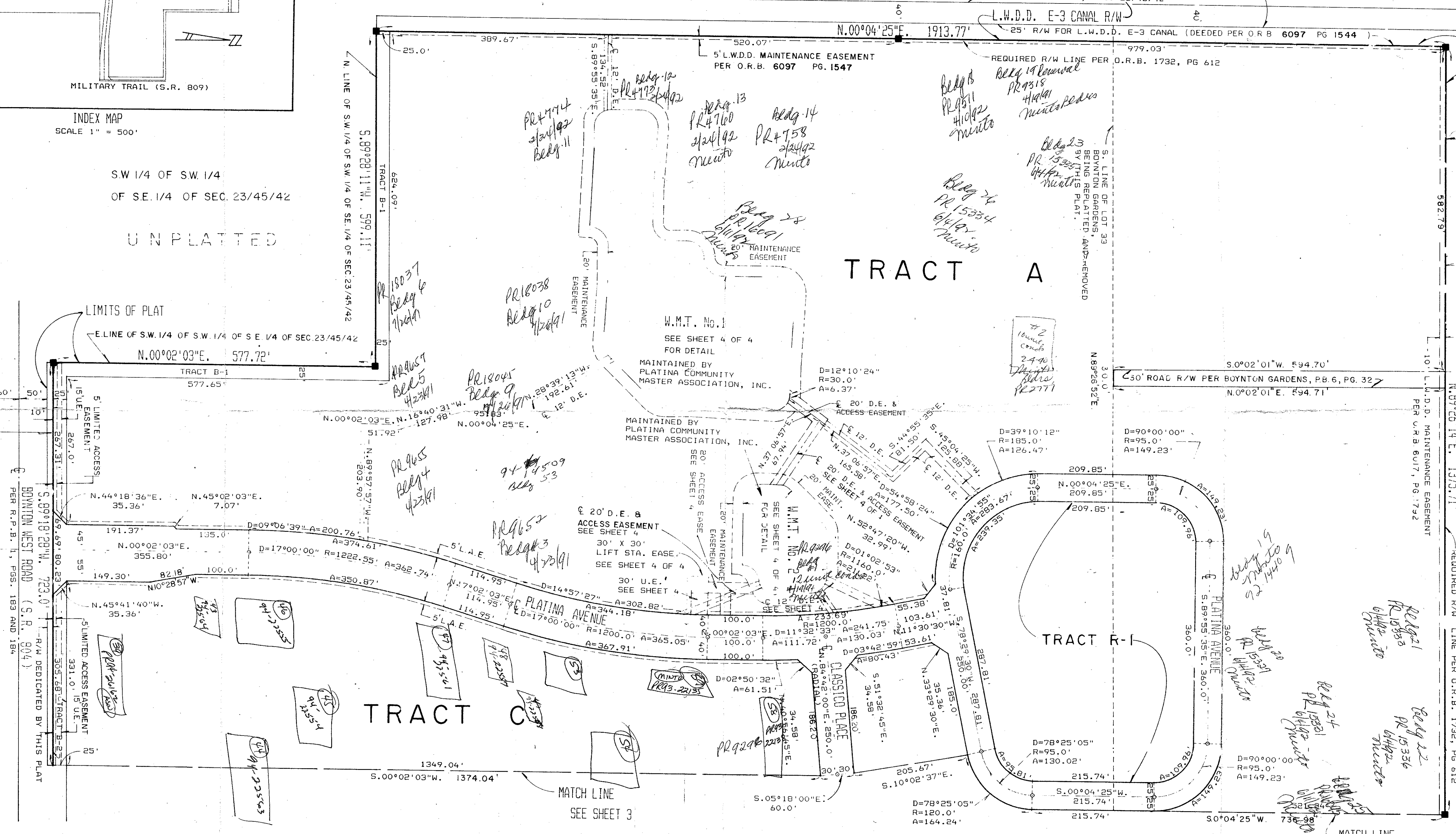
UNPLATTED

5,89°18'28"W. 1350.54' (TOTAL)
PLAT NO. 7,
P.B. 45,
CEDAR POINT
PLAT NO. 6, CEDAR POINT
P.B. 43, PGS. 148-151

5,89°19'29"W. 723.0'
PLAT NO. 5,
P.B. 45,
CEDAR POINT
PGS. 148-149

5,89°19'29"W. 723.0'
PLAT NO. 6, CEDAR POINT
P.B. 43, PGS. 148-151

SUBDIVISION - Platina Plat No. 1
BOOK - 83-A
PAGE - 83-A
FLOOD ZONE - 190B
QUAD - 35
ZONING - LR-72-S1
ZIP CODE - 33437
PUD NAME - TAZ 445



LIMITS OF PLAT
N. LINE OF
LOT 34, BOYNTON GARDENS

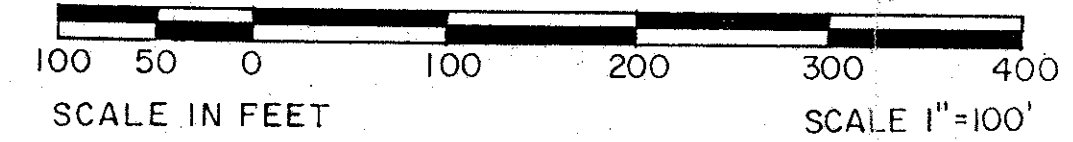
MIRROR LAKES PLAT No. 2
P.B. 37, PGS. 135-137

MIRROR LAKES PLAT No. 1
P.B. 39, PGS. 165-167

0226-005

Nick Benito II
Country Club Survey, PUD

63/83A



SCALE: SHOWN	NICK MILLER, INC. Land Surveying Planning & Development Consultants	DRAWN BY:
DATE: JAN. 1989		CHK:
PLATINA PLAT NO. 1 IN COUNTRY CLUB TRAIL - P.U.D.		
2560 RCA Blvd. • Suite 105 Palm Beach Gardens, Florida 33410 (407) 627-5200		DRAWING NUMBER: 00025F